



# InBody Scan

**Know your stats. Track your progress.**

**Curious about your muscle mass?**

**Your body fat?**

**Your body fat percentage?**

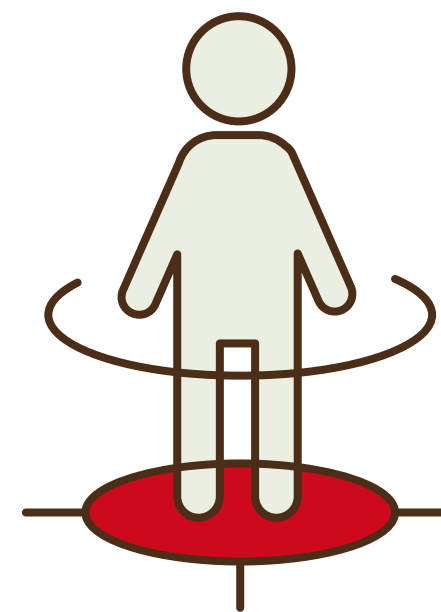
**Your visceral fat level?**

**InBody Scan can tell you.**

InBody uses bioelectrical impedance to directly measure all the stats. Our analysis includes muscle symmetry, localization of body fat, and recommendations to reduce visceral fat levels and increase total muscle mass.

**Muscle is being dubbed as an organ of longevity.  
Let's set your goals today!**

**Quick. Easy.  
Only \$45**



**Ask the front desk today!  
No appointment required.**

